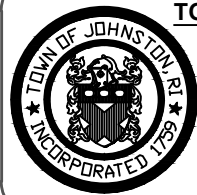
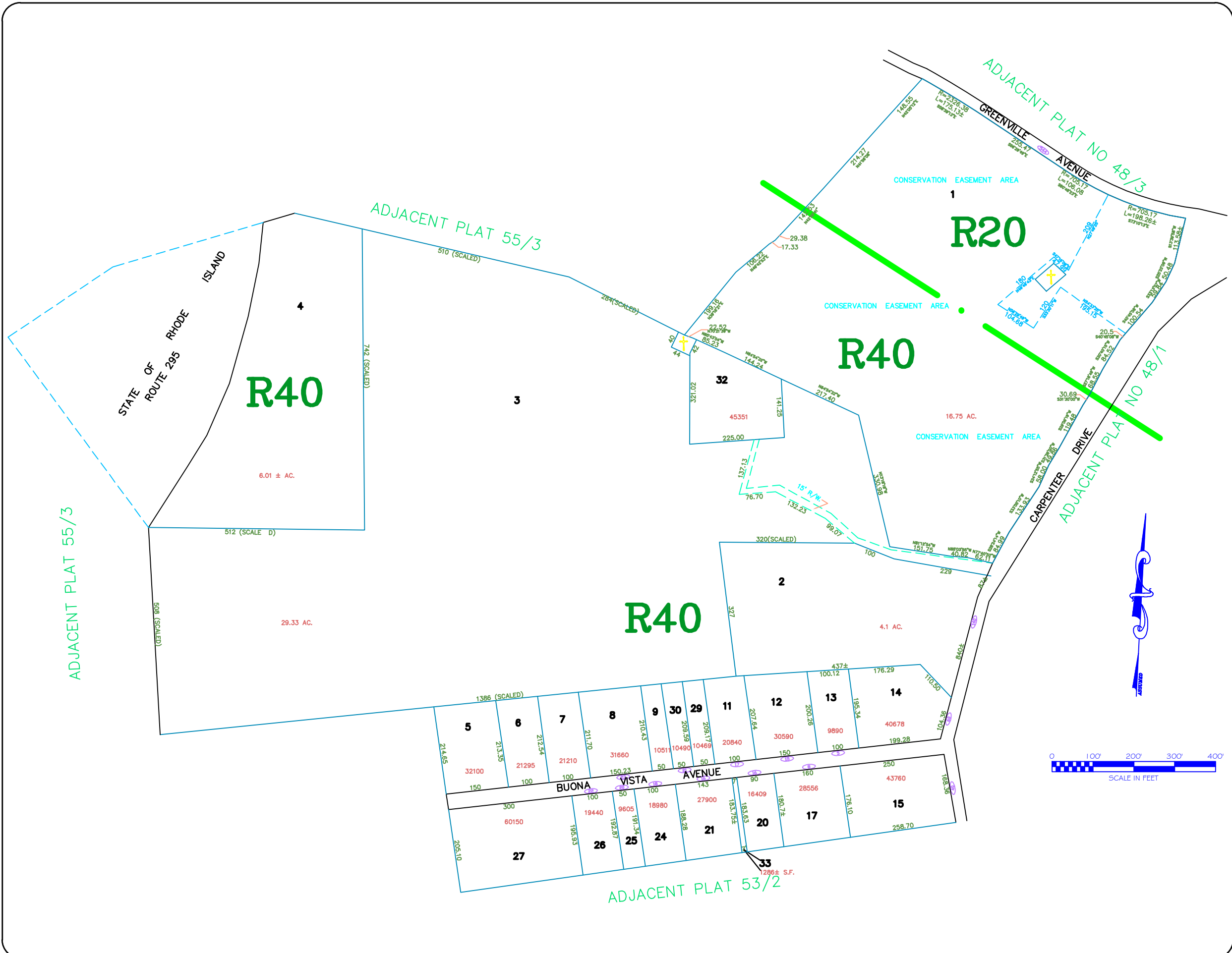


USER REVDATE FNAME



TOWN OF JOHNSTON
PROVIDENCE COUNTY,
RHODE ISLAND
INCORPORATED 1759

52

AMENDMENTS

LOT(S)	FROM	TO	ORDIN. #	DATE	NOTE

General Notes

No.	Revision/Issue	Date

General Legend

- Zoning Districts
- Zoning Districts Text
- Parcel Area
- Parcel Text
- Parcel Dimension
- Parcel Lines
- Public Easement Line
- House #
- North Arrow
- City Line
- Easement

Revision Date:
LAST REVISION MADE: 2009
ALL MAPS REVISED FROM EXISTING MAPS

Plot Date: 05-05-2010
Scale: NTS
Revised By: Benjamin Ng

Assessors Plot #: 52

ASSESSOR'S MAP
SHOWING ZONING DISTRICTS