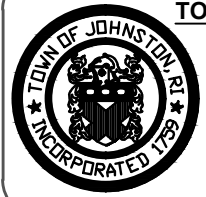
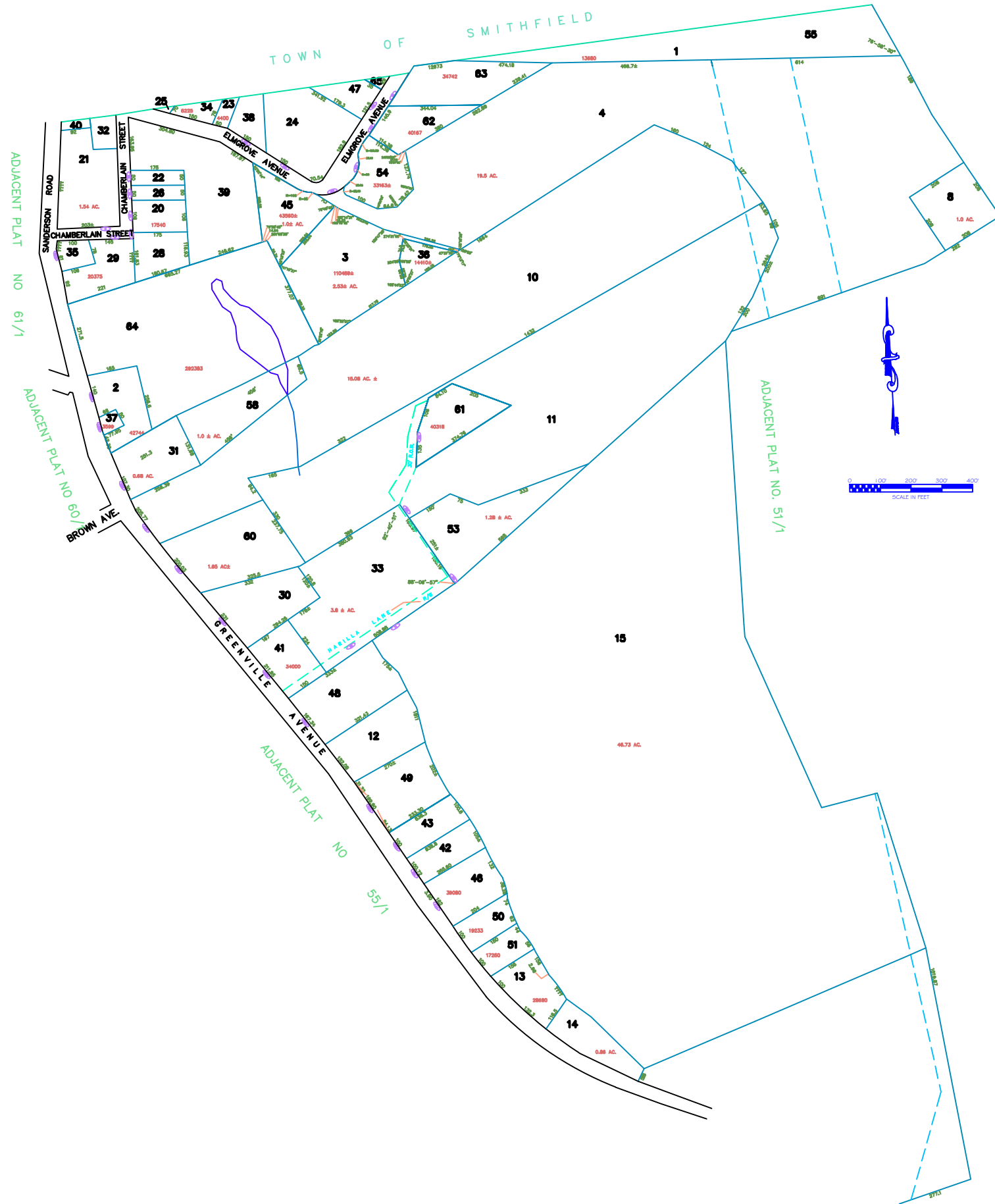


USER REVDATE FNAME



TOWN OF JOHNSTON

PROVIDENCE COUNTY,
RHODE ISLAND
INCORPORATED 1759

51/2

AMENDMENTS

LOT(S)	FROM	TO	ORDIN. #	DATE	NOTE
54	R40	R7	601	01/31/86	

General Notes

No.	Revision/Issue	Date

General Legend

- Zoning Districts
- Zoning Districts Text
- Parcel Area
- Parcel Text
- Parcel Dimension
- Parcel Lines
- Public Easement Line
- House #
- North Arrow
- City Line
- Easement

Revision Date:
LAST REVISION MADE: 2009
ALL MAPS REVISED FROM EXISTING
MAPS

Plot Date: 05-05-2010

Scale: NTS

Revised By: BN

Assessors Plot #:
51/2

ASSESSOR'S MAP
SHOWING ZONING DISTRICTS