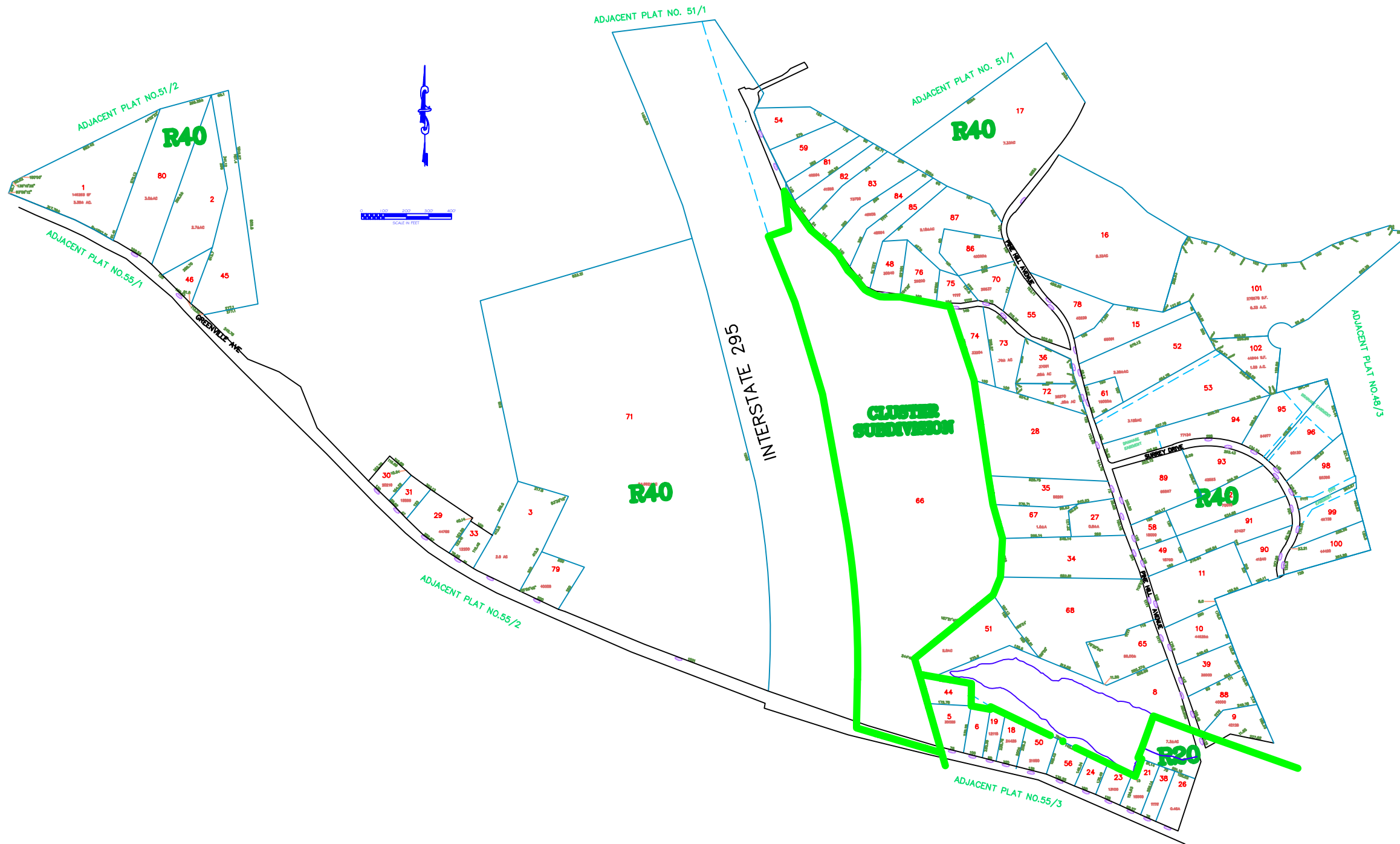


FNAME

REVDATE

USER



TOWN OF JOHNSTON
 PROVIDENCE COUNTY,
 RHODE ISLAND
 INCORPORATED 1759

50

AMENDMENTS

LOT(S)	FROM	TO	ORDIN. #	DATE	NOTE
88	R40	CS	2008-12	7/22/08	-

General Notes

No.	Revision/Issue	Date

General Legend

- Zoning Districts
- Zoning Districts Text
- Parcel Area
- Parcel Text
- Parcel Dimension
- Parcel Lines
- Public Easement Line
- House #
- North Arrow
- City Line
- Easement

Revision Date:
 LAST REVISION MADE: 2009
 ALL MAPS REVISED FROM EXISTING MAPS

Plot Date: 05-05-2010
 Scale: NTS
 Revised By: Benjamin Ng

Assessors Plot #: 50

ASSESSOR'S MAP
 SHOWING ZONING DISTRICTS