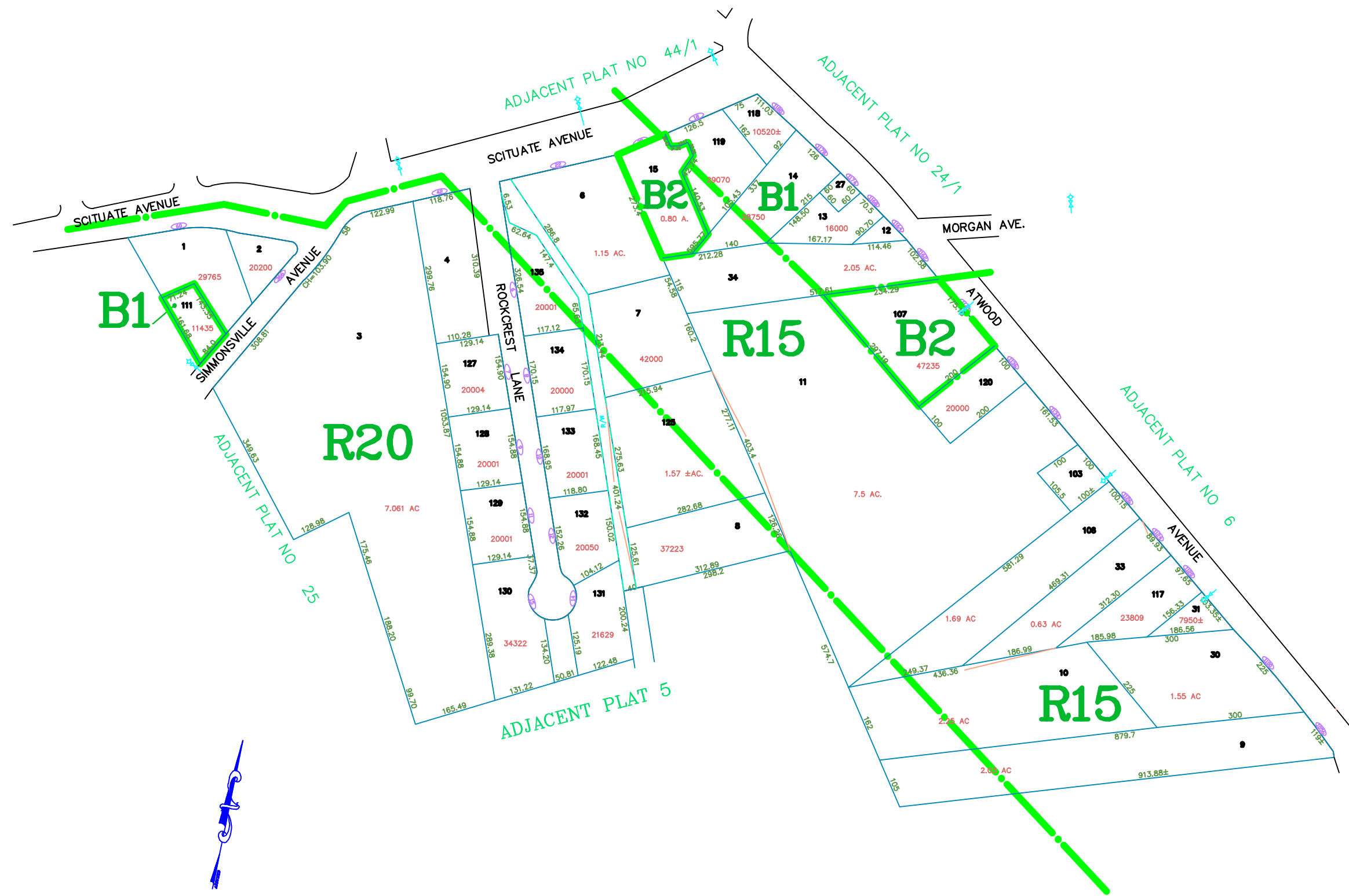


FNAME

REVDATE

USER



TOWN OF JOHNSTON

PROVIDENCE COUNTY,  
RHODE ISLAND  
INCORPORATED 1759

24/2

AMENDMENTS

LOT(S)	FROM	TO	ORDIN. #	DATE	NOTE
15	R15	B2	497	7/6/82	-
111	R20	B1	815	5/12/82	-
107	R15	B2	782	6/12/89	WITH STIP.

General Notes

No.	Revision/Issue	Date

General Legend

Zoning Districts	
Zoning Districts Text	
Parcel Area	
Parcel Text	
Parcel Dimension	
Public Easement Line	
House #	
North Arrow	
City Line	
Easement	

Revision Date:  
LAST REVISION MADE: 2009  
ALL MAPS REVISED FROM EXISTING  
MAPS

Plot Date: 05-05-2010  
Scale: NTS  
Revised By: BN

Assessors Plot #: 24/2

ASSESSOR'S MAP  
SHOWING ZONING DISTRICTS