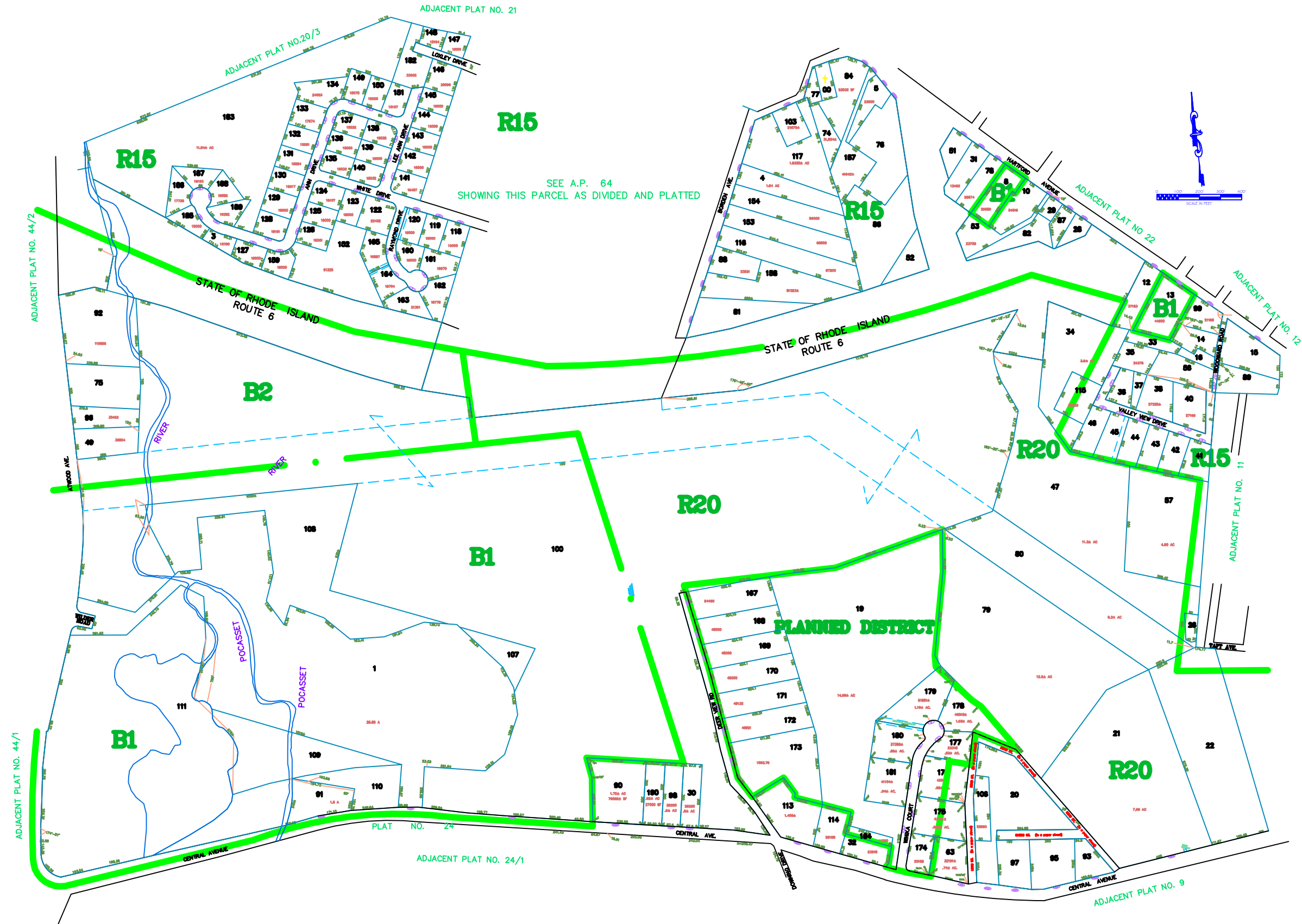


USER REVDATE FNAME



SEE A.P. 64
SHOWING THIS PARCEL AS DIVIDED AND PLATTED

TOWN OF JOHNSTON
PROVIDENCE COUNTY,
RHODE ISLAND
INCORPORATED 1759

23

AMENDMENTS

LOT(S)	FROM	TO	ORDIN. #	DATE	NOTE
19	R20	PLANNED	721	12/15/87	WITH STIP.
13	R15	B1	1019	10/14/97	-
8	R15	B1	1020	10/14/97	-

General Notes

No.	Revision/Issue	Date

General Legend

- Zoning Districts
- Zoning Districts Text
- Parcel Area
- Parcel Text
- Parcel Dimension
- Parcel Lines
- Public Easement Line
- House #
- North Arrow
- City Line
- Easement

Revision Date:
LAST REVISION MADE: 2009
ALL MAPS REVISED FROM EXISTING
MAPS

Plot Date: 05-05-2010
Scale: NTS
Revised By: BN

Assessors Plot #: 23

ASSESSOR'S MAP
SHOWING ZONING DISTRICTS